

From the Interim Director



I have not been an Interim anything before, and what an exciting opportunity this is for me!

The Edina Art Center is an amazing, friendly and encouraging place to learn and create. Join me as we enter a new era of arts programming and events. Feel free to contact me with questions or comments at mfrey@ci.edina.mn.us.

Michael

For class descriptions visit EdinaArtCenter.com or stop by the E.A.C. front desk. Call 952-903-5780 for individual class description.

for your calendar

NOVEMBER

Thu.-Sun. 24-27.. CLOSED for Thanksgiving.

DECEMBER

Thu. 1 Winter Registration begins for Members in Fall classes signing up for the same class.

Thu. 8 Winter Registration begins for Members.

Thu. 15 Winter Registration begins for Non-Members
Sat. Dec. 24-Mon. Jan. 2.....CLOSED, No Open Studios.

JANUARY 2012

Mon. 9 Winter classes begin

Mon. 16 CLOSED for MLK Jr. Day.

Mon. 16 13th Annual Potters' Games

FEBRUARY

Mon. 20 CLOSED for PRESIDENTS' Day

MARCH

Thu. 1 Spring/Summer Registration begins for Members in Fall classes signing up for the same class.

Thu. 8 Spring/Summer Registration begins for Members.

Thu. 15 Spring/Summer Registration begins for Non-Members

Register online at www.EdinaArtCenter.com

What's Up in Foss Gallery

continuing through December 23

"Gifts! Gifts! Gifts!"

Our Gift Shop expands into the Gallery with unique handcrafted gifts by more than 50 artists!

January 12 – February 22

"E.A.C. Faculty Exhibit"

Reception Thursday, Jan. 12, 5-8pm

March 1 – March 28

"TEEN Show"

Reception Thursday, Mar. 1, 5-8pm

April 5 – May 9

"EAC Student Show"

Reception Thursday, Apr. 5, 5-8pm

May 17 – June 20

"Garden Show & Sale"

Reception Thursday, May 17, 5-8pm

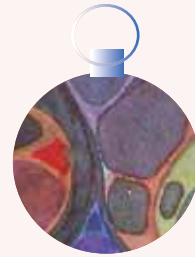
Class fee prices are subject to change so please call 952-903-5780 or check our website for up-to-date prices.

Gifts! Gifts! Gifts!

Our 24th Annual Sale through December 23

Sale features unique one-of-a-kind gifts to buy for everyone on your holiday list. More than 50 regional and international artists will offer

- pottery
- jewelry
- children's items
- wearables
- ornaments
- artkits @more!



Gift Shop Hours:

Mon. – Thu. 9 am – 8 pm
Friday 9 am – 3:30 pm
Saturday 9 am – 1 pm

Merchandise changes often so stop by frequently!
Located one mile west of Southdale on the south frontage road at 4701 West 64th St.

Pottery and Clay Sculpture 3000

CLASSES

Focused Intro to Clay

Bradley Benn & Siiri Silpala Doan
3070-Su, 1-4p, 4 wks-starts Jan. 15
3071-Su, 1-4p, 4 wks-starts Feb. 12
3072-Su, 1-4p, 4 wks-starts Mar. 11
\$102 nm/ \$92 m + \$8 clay and studio fee

Beg. and Cont. Pottery

Bradley Benn
3082-Th, 9:30a-12:30p, 6 wks-starts Jan. 12
3083-Th, 9:30a-12:30p, 6 wks-starts Feb. 23
\$153 nm/ \$138 m + \$12 studio fee

Monday Clay

Amy Von Bargaen
3102-M, 10a-1p, 8 wks-starts Jan. 9 (No class Jan. 16, Feb 20)
\$204 nm/ \$186 m + \$16 studio fee

Throwing Thursdays

Matthew Quinn
3112-Th, 6:30-9:30p, 6 wks-starts Jan. 12
\$153 nm/ \$138 m + \$12 studio fee

Pottery for the Kitchen

Matthew Quinn
3113-Th, 6:30-9:30p, 6 wks-starts Feb. 23
\$153 nm/ \$138 m + \$12 studio fee

Pottery for All Skill Levels

Grace Pass
3122-F, 6:30-9:30p, 6 wks-starts Jan. 13
3123-F, 6:30-9:30p, 6 wks-starts Feb. 24
\$153 nm/ \$138 m + \$12 studio fee

Pottery for All Skill Levels

Harriet Campe
3142-F, 9:30a-12:30p, 12 wks-starts Jan. 13
\$306 nm/ \$275 m + \$24 studio fee

Hand-building for All Skill Levels

Donna Getsinger
3152-Tu, 9:30a-12:30p, 6 wks-starts Jan. 10
3153-Tu, 9:30a-12:30p, 6 wks-starts Feb. 21
\$153 nm/ \$138 m + \$12 studio fee



by Robbie Spencer

NEW! Saturday Ceramic Sculpture

Robbie Spencer
3160-Sa, 10a-Noon, 10 weeks-starts Jan 21 (No class Feb. 25)
\$170 nm/ \$153 m + \$20 studio fee

Soda-fired Pottery

Intermediate to Advanced Sandra Shaughnessy
3202-Tu, 6:30-9:30p, 11 wks-starts Jan. 17
\$281 nm/ \$252 m + \$22 studio fee

Pottery for Intermediates

Sandra Shaughnessy
3212-W, 10a-1p, 11 wks-starts Jan. 18
\$281 nm/ \$252 m + \$22 studio fee

Pottery for All Skill Levels

Adama Sow
3222-M, 6:30-9:30p, 10 wks-starts Jan. 9 (No class Jan. 16, Feb. 20)
\$255 nm/ \$230 m + \$20 studio fee

Pottery for All Skill Levels

Grace Pass
3262-W, 6:30-9:30p, 6 wks-starts Jan. 11
3263-W, 6:30-9:30p, 6 wks-starts Feb. 22
\$153 nm/ \$138 m + \$12 studio fee

SPECIAL CLASSES

Valentine Clay for All Ages

Special friends age 12 thru 14 may attend with an adult!

Grace Pass

3033-Su, 1-3p- Feb. 12
Su, 1-3p- Feb. 19 – Glazing Session
\$68 nm/ \$61 m - Class price is for two people!

Asian Brush Painting for Potters

Harriet Campe
3034-Sa, 9:30a-3:30p, Jan. 28
\$51 nm/ \$45 m + \$10 supply fee

WORKSHOPS

Majolica Tile

Karin Kraemer
3040-Su, 10a-2p, Feb. 26
\$51 nm/ \$46 m + \$8 supply fee



by Karin Kraemer



by Simon Levin

Working Potter

Simon Levin
3041-Su, 1-4p, Jan. 22
\$38 nm/ \$34 m + \$6 supply fee

Firing Fee Prices To Increase January 2012.

Electric – NC, Gas - \$1.50 to \$1.75.

Soda - \$1.50 to \$2.00.

13th Annual Clay Games Monday, Jan. 16 10a-2p

\$5 per participant, lunch included
Ages 12-14 must attend with an adult!

For class descriptions visit EdinaArtCenter.com or stop by the E.A.C. front desk. Call 952-903-5780 for individual class description.

Art for All Ages 1000

Music for Children Infant to Age 5 with Adult

Peggy Nelson
1008-Th, 9:45-10:30a, 3 wks, Jan. 12, 19, 26
1009-Th, 9:45-10:30a, 3 wks, Feb. 9, 16, 23
1010-Th, 9:45-10:30a, 3 wks, Mar. 8, 15, 22
\$19 nm/ \$17 m per person

Clay Mosaic Ages 12 to Adult

Adama Sow
1080-Th, 6-8:30p, 6 wks-starts Jan. 12
1081-Th, 6-8:30p, 6 wks-starts Feb. 23
\$128 nm/ \$115 m + \$12 studio fee per person

After School Jewelry Ages 10 to Adult

Bobo Zinn
1085-Tu, 4-5:30p, 8 wks-starts Feb. 7
\$102 nm/ \$92 m + \$15 supply fee per person

NEW! Pottery for Beg. & Intern. Ages 12 to Adult*

Vanessa Greene
1090-Sa, 12:30-3:30p, 6 wks-starts Jan. 14
1091-Sa, 12:30-3:30p, 6 wks-starts Feb. 25
\$153 nm/ \$138 m + \$12 studio fee per person *12-14 must sign up with an adult.

The Art of Pastel Painting Ages 14 to Adult

Laura Frykman
1100-Tu, 6:30-9:30p, 12 wks-starts Jan. 10
\$306 nm/ \$275 m



Ashley by David age 12

Drawing Basics & Beyond Ages 6 to Adult

Ken Weldon
Call 952-903-5780 to arrange private lessons.

Youth 2000

Register online at www.EdinaArtCenter.com

Pre-School Art Club

Ages 4 to 5 Gail Katz-James
2001-Tu, 10-11a, 6 wks-starts Jan. 10
2002-Tu, 10-11a, 6 wks-starts Feb. 21
\$51 nm/ \$46 m + \$12 supply fee

Clay for Kids

1st – 3rd Grade Adama Sow
2020-Tu, 4:15-6:15p, 6 wks-starts Jan. 10
2021-Tu, 4:15-6:15p, 6 wks-starts Feb. 21
\$102 nm/ \$92 m + \$12 supply fee

Beginning Drawing

1st – 3rd Grade Carol Clay
2035-Th, 4:15-5:45p, 6 wks-starts Jan. 12
2036-Th, 4:15-5:45p, 6 wks-starts Feb. 23
\$77 nm/ \$69 m + \$12 supply fee

Bookmaking 101 Workshop

2nd – 5th Grade Gail Katz-James
2045-Sa, 10a-noon, Jan. 14
\$26 nm/ \$22 m + \$2 supply fee

Fabulous Valentine Gift Workshop

2nd – 5th Grade Gail Katz-James
2046-Sa, 10a-Noon, Feb. 11
\$26 nm/ \$22 m + \$2 supply fee

Basic Drawing for Youth

3rd – 5th Grade Henry Taly
2052-Sa, 1-3p, 6 wks-starts Feb. 25
\$102 nm/ \$92 + \$12 supply fee

Clockhead Clock Club

3rd – 7th Grade Henry Taly
2055-Sa, 12:30-3p, 5 wks-starts Jan. 14
\$106 nm/ \$95 m + \$15 supply fee

French Immersion & Clay

4th – 6th Grade Adama Sow
2060-M, 4:15-6:15p, 5 wks-starts Jan. 9 (No class Jan. 16)
2061-M, 4:15-6:15p, 5 wks-starts Mar. 5
\$85 nm/ \$77 m + \$10 supply fee

Youth Drawing

4th – 6th Grade Carol Clay
2070-Th, 6-7:30p, 6 wks-starts Jan. 12
2071-Th, 6-7:30p, 6 wks-starts Feb. 23
\$77 nm/ \$69 m + \$12 supply fee

Drawing

7th – 8th Grade Carol Clay
2080-M, 4:30-6p, 5 wks-starts Jan. 9 (No class Jan. 16)
2081-M, 4:30-6p, 5 wks-starts Feb. 27
\$64 nm/ \$58 m + \$10 supply fee

Drawing for Teens

8th – 10th Grade Henry Taly
2090-W, 4:30-6:30p, 6 wks-starts Jan. 11
\$102 nm/ \$92 m + \$12 supply fee

Let's Make Stuff

8th – 10th Grade Henry Taly
2095-Sa, 9:30-11:30a, 5 wks-starts Feb. 25
\$85 nm/ \$77 m + \$12 supply fee

ART ACADEMY

2nd – 4th Grade Molly Blotz & Anne Spooner
2210-M, 5-7p, 15 wks-starts Jan. 9*
\$255 nm/ \$230 m + \$20 supply fee
*No class Jan. 16, Feb. 20, Apr. 2.

4th – 6th Grade Molly Blotz & Anne Spooner
2211-W, 5-7p, 17 wks-starts Jan. 11*
\$289 nm/ \$260 m + \$20 supply fee
*No class Apr. 4.

6th – 12th Grade Michael Frey & Denise Johnson
2220-Tu, 7-9p, 17 wks-starts Jan. 10*
\$289 nm/ \$260 m + \$20 supply fee
*No class Apr. 3.

6th – 10th Grade Elizabeth Franklin
2221-Tu, 6:45-8:45p, 15 wks-starts Jan. 10*
\$255 nm/ \$230 m + \$20 supply fee
*No class Jan. 24, Feb. 28, Apr. 3.

Edina Art Center
4701 West 64th Street
Edina, MN 55435

Edina Art Center

office 952-903-5780

email ArtCenter@ci.edina.mn.us

fax 952-903-5781

Monday-Thursday.....9 am - 8 pm

Friday.....9 am - 3:30 pm

Saturday.....9 am - 1 pm

Media Studio 952-903-5782

Tuesday-Thursday.....Noon - 8 pm

Friday.....10 am - 3 pm

Saturday.....9 am - 1 pm



There's Nothin' Like Bein' a Grandma by Diana Hedges

EDINA ART CENTER

Winter 2012 Class Schedule

ADULT CLASSES

Paint & Draw 4000

Classes & Workshops with Atelier-trained Instructors

Classical Realism & Indirect Dutch Painting Method

Ages 15 +
Kären Nemer
Call 952-903-5780
to arrange for private lessons.

Realistic Painting & Drawing

**Richard Abraham/
Michael Frey**
4020-Th, 6:30-9:30p, 12 wks-
starts Jan. 12
\$306 nm/ \$275 m



August Sky by Richard Abraham

Portrait from Photos

**Richard Abraham/
Michael Frey**
4047-F, 9:15a-12:15p, 12 wks-
starts Jan. 13
\$306 nm/ \$275 m
Meets at Edina Senior Center.

Adv. Painting in Pastels or Oils

Laura Frykman
4067-W, 6:30-9:30p, 12 wks-
starts Jan. 11
\$306 nm/ \$275 m



Girl with the Koi Tattoo
by Susan Steging Cook

Portraiture

**Susan Steging Cook/
Michael Frey**
4040-M, 6:30-9:30p, 10
wks-starts Jan. 9 (No class Jan.
16, Feb. 20)
\$255 nm/ \$230 m + \$90
model fee

Portrait from Photos

**Diane Flanagan/
Michael Frey**
4045-Tu, 9:15a-12:15p, 12
wks-starts Jan. 10
4046*-Th, 9:15a-12:15p,
12 wks-starts Jan. 12
\$306 nm/ \$275 m
*Meets at Edina Senior Center.



Portrait of Heather
by Diane Flanagan

Portraits in Pencil & Charcoal

Louise Gillis
4069-Tu, 9:30a-12:30p, 8 wks-
starts Jan. 10
\$204 nm/ \$184 m + \$60 model fee
Meets at Edina Senior Center.

Realistic Drawing & Painting

Louise Gillis
4070-Th, 1-4p, 12 wks-starts Jan. 12
\$306 nm/ \$275 m

Life Drawing

Louise Gillis
4080-Th, 9a-Noon, 12 wks-starts
Jan. 12
\$306 nm/ \$275 m + \$90 model fee
(Model fee subject to change de-
pending on class size.)

Draw & Paint the Clothed Figure

Louise Gillis
4090-M, 9:30a-12:30p, 12 wks-starts
Jan. 9 (No class Jan. 16, Feb. 20)
\$306 nm/ \$275 m + \$87 model fee.
(Model fee subject to change de-
pending on class size.)

Painting & Drawing

Friday Painters' Studio for Members

Dean Koutsky
4250-F, 12:30-3:15p, 12
wks-starts Jan. 13
\$90 Members

Pastels: A Three-Step Process

Judy Lieber
4260-Tu, 9a-Noon, 6 wks-
starts Jan. 24
\$153 nm/ \$138 m

Quick Draw: Faces

Judy Lieber
4265-W, 9a-Noon, 6 wks-
starts Jan. 25
\$153 nm/ \$138 m

Members' Wednesday Afternoon Group

Wednesdays, 12:30-3:30pm
4200-Jan. 11 - Mar. 28
\$54 Members



by Deb Magelssen

Paint Your Pet in Acrylics Workshop

Deb Magelssen
4267-Tu, 3-6p, 5 wks-starts
Jan. 10
4268-Tu, 3-6p, 5 wks-starts
Feb. 14
\$128 nm/ \$115 m

Basic Drawing

Dr. Mary McNaughton
4270-Th, 3-6p, 8 wks-starts
Jan. 12
\$204 nm/ \$184 m

Color Drawing

Dr. Mary McNaughton
4272-Th, 6-9p, 8 wks-starts
Jan. 12
\$204 nm/ \$184 m

Intro to Illustration

Christine Mitzuk
4275-W, 7-9p, 8 wks-starts Jan. 11
\$136 nm/ \$122 m

Painting Studio

Dorothy Odland
4280-W, 9:30-12:30p, 6 wks-
starts Jan. 11
4281-W, 9:30-12:30p, 6 wks-
starts Feb. 22
\$153 nm/ \$138 m

Oil & Acrylic Painting Studio

Holly Stone
4305-Tu, 9:30a-12:30p, 6 wks-
starts Feb. 7 (No class Feb. 28)
4306-Tu, 1-4p, 6 wks-starts Feb. 7
(No class Feb. 28)
\$153 nm/ \$138 m

Register online at www.EdinaArtCenter.com

Water Media 5000



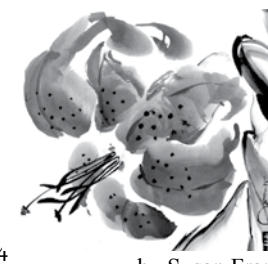
Members' Ink & Brush Painting Open Studio
Tuesdays, 12:30-3:30p
5000-Jan. 10 - Mar. 27
\$54 Members

Watercolor: Beyond the Beginner

Marian Alstad
5020-M, 6:30-9:30p, 6 wks-starts Jan. 9
(No class Jan. 16, Feb. 20)
5021-M, 6:30-9:30p, 6 wks-starts Mar. 5
\$153 nm/ \$138 m

Sumi-E: Tropical Flowers

Susan Frame
5130-Tu, 12:30-3:30p, 6 wks-starts Jan. 24
\$153 nm/ \$138 m



by Susan Frame

Watercolor Classes with Georgia Kandiko



by Georgia Kandiko

Beginning Watercolor

Georgia Kandiko
5200-M, 9:30a-Noon, 4 wks-
starts Jan. 9 (No class Jan. 16)
5201-M, 9:30a-Noon, 4 wks-
starts Feb. 27
\$85 nm/ \$77 m + \$20 supply fee

Watercolor Portrait Painting

Georgia Kandiko
5220-Tu, 9:30-Noon, 4 wks-
starts Jan. 10
5221-Tu, 9:30-Noon, 4 wks-
starts Feb. 28
\$85 nm/ \$77 m

Continuing Watercolor & New Tricks for Old Dogs

Georgia Kandiko
5230-M, 1-3:30p, 4 wks-
starts Jan. 9 (No class Jan. 16)
5231-M, 1-3:30p, 4 wks-
starts Feb. 27
\$85 nm/ \$77 m

Create Your Own Flower Guide in Watercolor

Georgia Kandiko
5240-Tu, 1-3:30p, 4 wks-
starts Jan. 10
5241-Tu, 1-3:30p, 4 wks-
starts Feb. 28
\$85 nm/ \$77 m + \$15 supply fee

For class descriptions visit EdinaArtCenter.com
or stop by the E.A.C. front desk.
Call 952-903-5780 for single class description.

Peggy Kelly Media Arts 6000

Complete your media projects at E.A.C.

- Slides and pictures to DVD or CD
- Home movies to DVD
- Record audio CD's
- Create & edit a video DVD

We are open and going strong on media transfer, however our electronic media classes have experienced very low registration levels this year. We will evaluate our offerings and develop a new curriculum that is more responsive to current interests. Watch for more news in the Spring class schedule.

Membership

Edina Art Center Membership benefits YOU and your community! Did you know that it is not necessary to be an Edina resident to become a member.

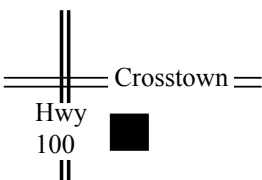
JOIN TODAY! Memberships are valid for one year from date of purchase. Family memberships include parents & all children under 18.

Benefits include:

- invitations to openings & special events
- discounts on classes (10% or more)
- 10% reduction on supplies purchased here
- place to meet & exchange ideas with other art enthusiasts
- entry in the annual Members' Juried Show
- use of Art Center studios when space is available
- membership rate applies to Media Studios

Sign up by phone 952-903-5780

Individual member	\$30
Family members	\$45
Contributing member	\$50
Sustaining member	\$100+
Patron	\$500+



For class descriptions visit EdinaArtCenter.com
or stop by the E.A.C. front desk.
Call 952-903-5780 for individual class description.

Photography 6000

Preserve your memories today in the Peggy Kelly Media Arts Studios

Fine Art B&W Photography

Ric Johnson
6400-Th, 7-9p, 4 wks-starts Jan. 12
6401-Th, 7-9p, 4 wks starts Feb. 16
\$136 nm/ \$122 m

Darkroom Open Studio

6001 Jan. 9 - Feb. 20
6002 Feb 21 - Apr. 1
\$28 per 6 week session.

Open to Edina Art Center and Crosstown Camera Club members only. Previous darkroom experience is required. Sign up in person or call 952-903-5780.

Our labs are open:
• M-Th 9a - 8p
• F 9a - 3p
• Sa 9a - 12:30p



Cover Art
by Diana Hedges
All photos by Diana Hedges

Edina Art Center Staff

Michael Frey, Interim Director
mfrey@ci.edina.mn.us
Phil Johnson, Media Manager
Anne Spooner, Program & Gallery Coordinator
Sandra Shaughnessy, Pottery Studio Manager
Adama Sow, Facilities Manager
Priscilla Hill, Editor
Gene Andersen, Don Clay, Judy Grimes, Kay Gritton, Naomi Johnson, Lenore Jonas, Monica Sullivan.

Calligraphy -

A Solid Italic Beginning

Ardie Gallant
7160-Th, 6-9p, 6 wks-starts Jan. 12
7161-Th, 6-9p, 6 wks-starts Feb. 23
\$153 nm/ \$138 m

Out of the Box Jewelry

Kay Gritton
7170-Th, 7-8:30p, 3 wks-starts Feb. 9
\$38 nm/ \$34 m + \$5 supply fee

NEW!!

The Author's Studio Workshops

Colin Nelson
Saturdays, 10-11:30a
7180-Jan. 14 Christopher Valen - Mystery
7181-Feb. 11 Erin Hart - Historical Fiction
7182-Mar. 10 Gary Armstead - General Fiction
7183-Apr. 14 Sujata Massey - Mystery
7184-May 12 David Breedon - Poetry & Fiction
Free, Donations welcome.

Basic Jewelry

Soren Priede
7190-M, 7-9p, 8 wks-starts Jan. 9 (No class Jan. 16, Feb. 20)
\$136 nm/ \$122 + \$15 supply fee

Experience the Inner World of Images

Using Jung's Active Imagination Technique
Patricia Salek
7208-Sa, 11:15a-1p, 3 wks-starts Mar. 17
\$45 nm/ \$40 m + \$3 supply fee



by Patricia Salek

Metal Jewelry

Bobo Zinn
7340-Tu, 1-3p, 8 wks-starts Feb. 7
\$136 nm/ \$122 m

Members' Open Studio for Jewelry

Wednesdays, 5-8p
7000-Jan. 11 - Mar. 29
\$54 Members

Hauschka Therapeutic Watercolor Painting

Donna Webb
Intro to Hauschka Therapeutic Watercolor Painting Workshops
Donna Webb
7315-Sa, 1-5p, Jan. 21
7316-Sa, 1-5p, Feb. 11
7317-Sa, 1-5p, Mar. 3
\$51 nm/ \$46 m + \$10 supply fee
Meets at Center for Wholeness, 4506 Valley View Road, Edina.

Earth, Water, Air and Fire: Painting the Elements

Donna Webb
7319-Th, 7-9p, 6 wks-starts Jan. 12
\$102 nm/ \$92 m + \$10 supply fee
Meets at Center for Wholeness, 4506 Valley View Road, Edina

Register On-line at www.EdinaArtCenter.com

Edina Art Center
4701 W 64th Street
Edina, MN 55435
952-903-5780
Media Arts: 952-903-5782

Art Center Members who live in Edina receive a \$5 discount for one class per session.

Class #	Title
Inst.	
Day	Starting Date
Time	# weeks

Name _____ Member # _____ Please read registration policy. Attach information regarding any disability, allergy, or special need.

Address _____ City _____

Zip _____ Phone H _____ W _____

E-mail _____ Cash _____ Check _____ Charge _____ Member _____ Non-member _____

Adult Under 18: Age _____ Grade _____ Birthdate _____

Visa MC Discover AMX Card# _____ Exp. Date _____

Sign _____

\$ _____ Tuition + \$ _____ FEES + \$ _____ (donation optional) - \$ _____ residency benefit

+ New Membership _____ =TOTAL RECEIVED \$ _____

Office: Date _____ Session _____ by _____ Supply List Sent _____

I understand that some of the information provided on this form will be public data. Public data is available to anyone who makes a request for such information. My credit card number is not considered public data.

Dear Art Center Friends,

Well, here I am out at Big Rock Ranch driving my Dad's tractor. At age 63, he finally thought that I was old enough to handle the big yellow monster. After 25 years of Art Center Board Meetings, Special Events, Gallery Openings, Class Schedules, Budgets, Claimsheets and so many other tasks, I have found my Chapter Two career as a rancher. It feels good.

I would like to thank the EAC dedicated staff members, instructors and volunteers who work so hard to bring you quality individualized guided Art education. Yeahhhhhh team! You'll do just hunky dory with Michael's leadership, so please treat him well.

Most of all I thank John Keprios, Edina Parks and Recreation Director, who has given never-ending support and encouragement to all of his staff. His wisdom, integrity and dedication guides our parks and recreational programming and creates the premier community that we live in.

In closing, if the Edina Art Center has touched your heart in any way, I urge you to let your voices be heard by emailing or writing to the City of Edina Mayor and City Council today. Let them know of your support for this amazing place.

Happy Trails! Peace and Love,

Diana

Register online at www.EdinaArtCenter.com

