



City of Edina

---

## Construction Update No. 4

# SPECIAL NOTICE OF TEMPORARY SCHOOL BUS STOPS

## Country Club Area Sewer, Water, and Street Reconstruction Project

### City Improvement No. A-213 and A-214

August 28, 2009

Through late-October Palda will continue reconstructing streets in Stages 6B thru 10.

The amount of remaining reconstruction work varies from Stage to Stage. Generally, there is less work remaining in Stage 6B than there is in Stage 10. After all of the streets in Stages 6B – 10 receive their last layer of blacktop pavement, Palda will saw crack control joints into the final layer of blacktop pavement and install the brick paver crosswalks (crosswalks).

Through late-October Palda's remaining work, especially crosswalk construction, will systematically close most of the street intersections in the project area south of Bridge Street. The closures needed for crosswalk construction will occur in phases similar to those used during spring 2009 north of Bridge Street. Crosswalk construction phasing will again create some temporary long cul de sacs in which school buses are unable to turn around. However, emergency vehicles can still access the project area because if necessary they will destroy a crosswalk under construction to reach an emergency.

#### Temporary School Bus Stop Locations for Children in the Entire Project Area

With input from the City, school bus operators for Edina Public Schools (EPS) and Breck and Blake schools have decided to once again, and as much as possible, avoid traveling the north-south streets through the project area with their school buses for the start of the 2009 school year.

- Effective Monday morning **September 8** EPS will pick up children from all Stages of the project area at only the temporary school bus stop locations shown on the enclosed map. Service at only these temporary bus stops will continue until late-October.

Please have your children show up at their regularly scheduled pick up time at the temporary school bus stop closest to your home. If your child attends Blake or Breck School, please watch for a letter from Blake or Breck School regarding their bus stop locations.

#### Reinstatement of Bridge Street Parking Ban

In order to accommodate the buses use of Bridge Street, also effective **September 8**, the City will **reinstate** the parking restriction along the south side of Bridge Street east of Browndale Avenue. Between and including September 8 and late-October, there will be **no** parking on **either** side of

---

#### City Hall

4801 WEST 50TH STREET  
EDINA, MINNESOTA, 55424-1394

[www.cityofedina.com](http://www.cityofedina.com)

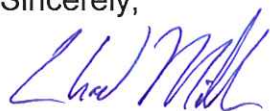
952-927-8861  
FAX 952-826-0390  
TTY 952-826-0379

Page 2  
Country Club Area Sewer, Water, and Street Reconstruction  
City Improvement No. A-213 and A-214  
August 28, 2009

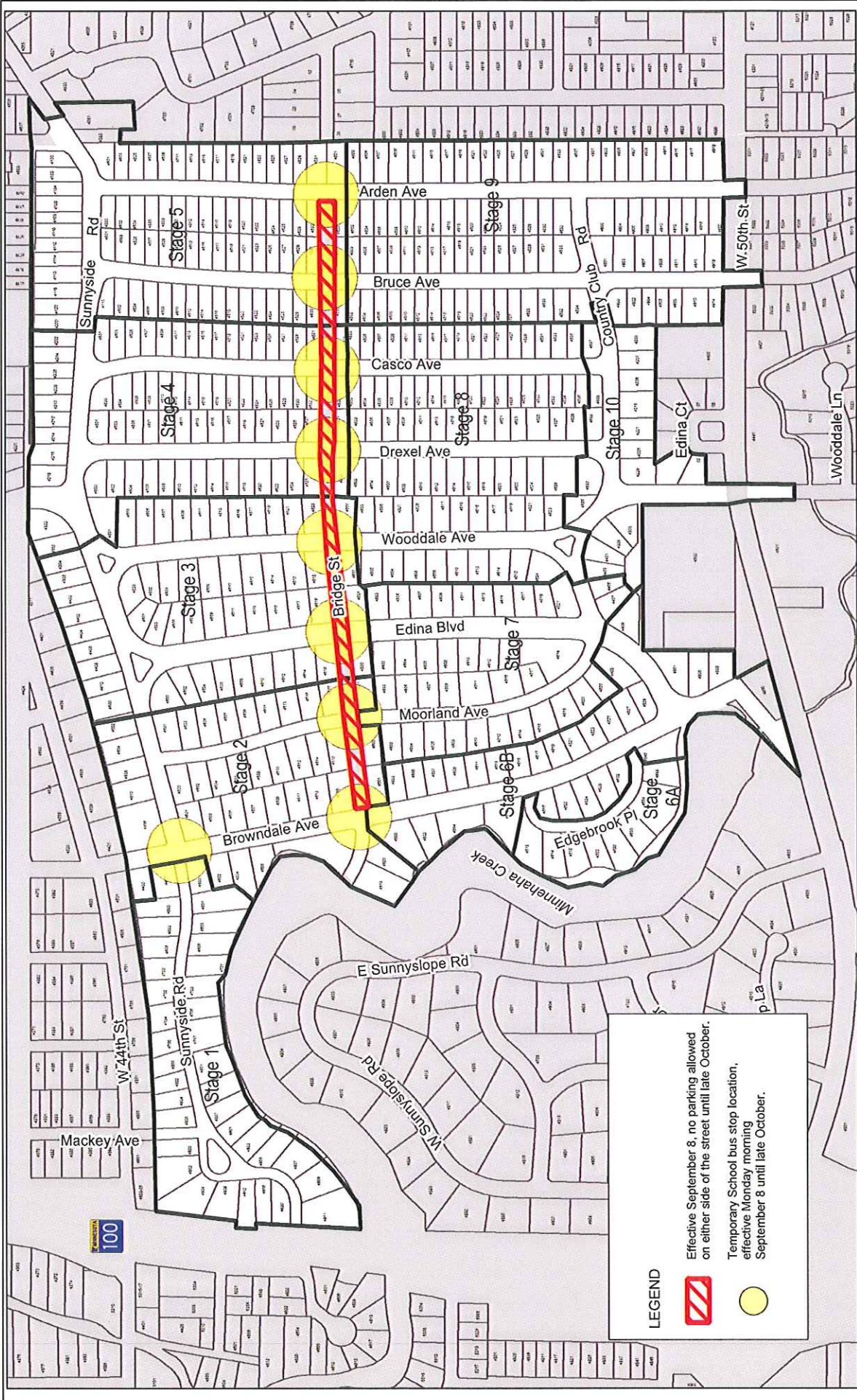
Bridge Street east of Browndale Avenue. We understand this is an inconvenience. The ban is necessary to provide access to both emergency vehicles and the buses.

Call or e-mail me at SEH with your questions and concerns, 952.912.2633 and [cmillner@sehinc.com](mailto:cmillner@sehinc.com).

Sincerely,

A handwritten signature in blue ink, appearing to read "Chad Millner". The signature is stylized and cursive.

Chad Millner, SEH



**LEGEND**

- Effective September 8, no parking allowed on either side of the street until late October.
- Temporary School bus stop location, effective Monday morning September 8 until late October.

EDINA  
MINNESOTA

COUNTRY CLUB AREA  
SEWER, WATER AND STREET RECONSTRUCTION

SCHOOL BUS STOPS AND  
PARKING RESTRICTIONS

FILE NO.  
AEDINA0503  
DATE  
8/27/09

